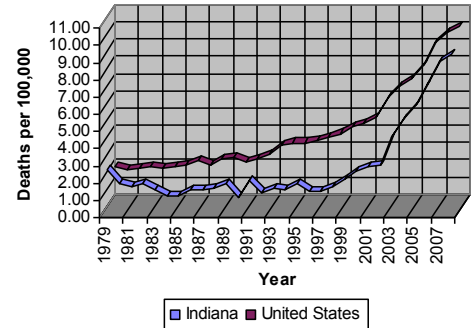


INDIANA POISON CENTER FUNDAMENTALS

UNINTENTIONAL POISONINGS

- Indiana Poison Center established 1979
- Average of 50,626 unintentional cases per year (1988-2011)
- Unintentional Deaths
 - 229% increase from 2002 to 2008
 - 9% lower death rate per 100,000: 9.3 (IN) vs 10.23 (US)



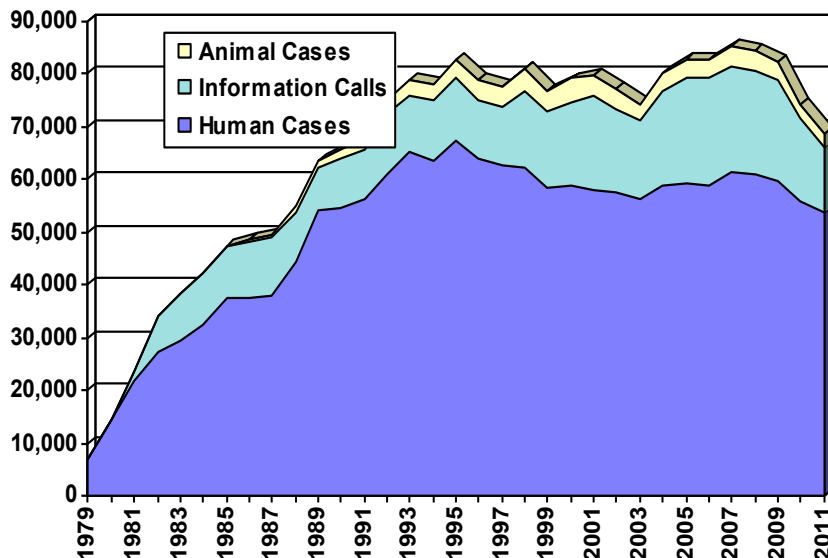
COST SAVINGS

It is conservatively estimated that the **Indiana Poison Center saves \$36 million dollars a year in health care costs**, or over **\$15 for every dollar of its \$2.4 million budget** spent on providing poison center services.

- **Reduction in ED Visits: Over \$37 million per year**
70% of 39,152 cases treated in 2011 at home, avg \$1,382 ED charge per case [Lovecchio 2008; inflation adjusted]
- **Decreased Hospital Admissions: \$17 million per year**
16% increase in admissions without poison center consultation = 936 extra admissions, \$16,765 per admission, 5,848 total admissions for poisoning (CGO, US House of Representatives, 1994; ISHD, 2010)
- **Decreased Patient Length of Stay (LOS): \$33 million to \$83 million per year**
LOS extended 1.2 to 3 days when poison center not consulted - IPC consulted on 4,521 admitted patients, \$6,167 per day average hospital charge (ISDH, 2010; IPC 2011; inflation adjusted)
- **Total Estimated Savings: from \$36 million to \$59 million per year**
Actual payment at 40 to 50% of hospital charges
- **Payor Mix for Poisoning and Toxic Effects of Drugs and Non-medicinals:**
Commercial 27%; Medicare 26%, Self-Pay 20%; Medicaid 19%; Other 7% (ISDH, 2010)

POISON CALL STATISTICS

- 2,136,617 calls (1979 – 2011)
- Poison exposure calls per year: 272% increase
- Information requests per year: 76% increase
- 2011 statistics:
 - 53,831 human exposures
 - 12,187 information calls
 - 2,481 animal exposures
 - Cost per Human Case: \$44.38
 - Human Cases / FTE: 4,456





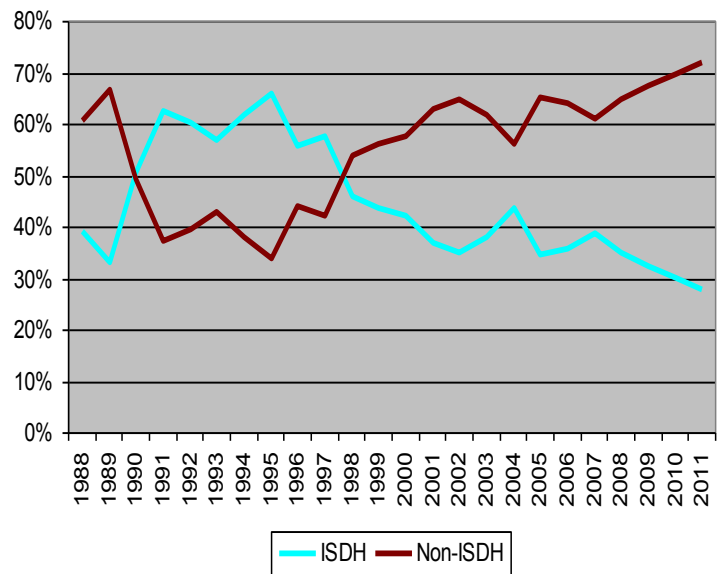
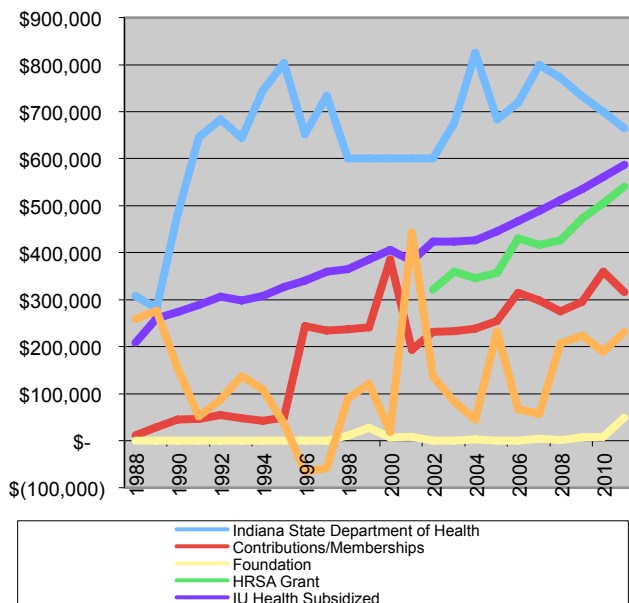
FACT SHEET 2012

Services the Indiana Poison Center provides are mandated by IC 16-19-3-22. These include: 1) emergency poison information; 2) poison prevention education for the public; and 3) education to health care providers.

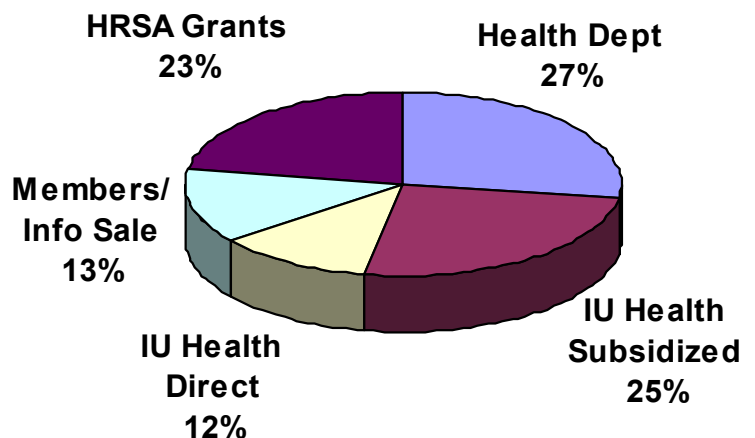
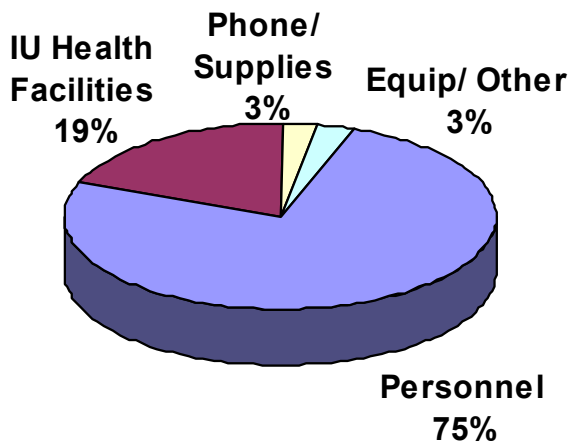
Statewide: 800-222-1222 Marion County: 962-2323

FUNDING HISTORY 1988-2011

- State contribution: \$15,552,116
- IU Health / Methodist Hospital contribution: \$17,316,293 (\$7,937,715 direct; \$9,378,578 subsidized)
- Federal contribution: \$4,175,174 (2002-2011)
- Federal support averaging 20% since 2002
- State support averaging 44% since 1988, but has steadily decreased to 28% in 2011
- State funding per capita: \$0.10 (National Mean: \$0.22; National Median: \$0.21)



2011 EXPENSES AND REVENUES



R. Brent Furbee, MD FACEP ABMT
 Medical Director
 (317) 962-2335

James B. Mowry, PharmD DABAT, FAACT
 Director
 (317) 962-2335



FACT SHEET 2012

Services the Indiana Poison Center provides are mandated by IC 16-19-3-22. These include: 1) emergency poison information; 2) poison prevention education for the public; and 3) education to health care providers.

Statewide: 800-222-1222 Marion County: 317-962-2323

EXPENSE CATEGORIES BY FUNDING SOURCE

Indiana State Department of Health

- Personnel Costs (Wages and Benefits)
 - SPIs (percentage)
 - Director (percentage)
 - Administrative (percentage)
- 800 number telephone charges
- Public education pieces (Starting 2005)

HRSA Federal Grant

- Personnel Costs (Wages and Benefits)
 - SPIs (percentage)
 - Director (percentage)
 - Administrative (percentage)
 - Team Leader (all)
 - Health Educator (all)
- Public Education pieces (Before 2005)
- Travel (Team Leader, Health Educator)
- Other expenses related to Health Education (Fees, telephone, contracted services for evaluations/surveys, public education supplies/equipment)

Generated Funds

- Personnel Costs (Wages and Benefits)
 - SPIs (percentage)
 - Director (percentage)
 - Administrative (percentage)
- 800 number telephone charges
- Maintenance / Repair / Equipment
- Public education materials
- Office Supplies
- Contracts
- Travel (except Health Educator)

Hospital Funds

- Personnel Costs (Wages and Benefits)
 - SPIs (percentage)
 - Director (percentage)
 - Administrative (percentage)
- 800 number telephone charges
- Maintenance / Repair / Equipment
- Public education materials
- Office Supplies
- Contracts
- Travel (except Health Educator)
- Subsidized costs
 - Medical Director Salary
 - Depreciation (building and fixtures)
 - Interest and insurance
 - Telephones
 - Equipment depreciation
 - Administrative and general support (computer services, payroll, purchasing, accounting)
 - Operation of plant
 - Housekeeping
 - Cafeteria

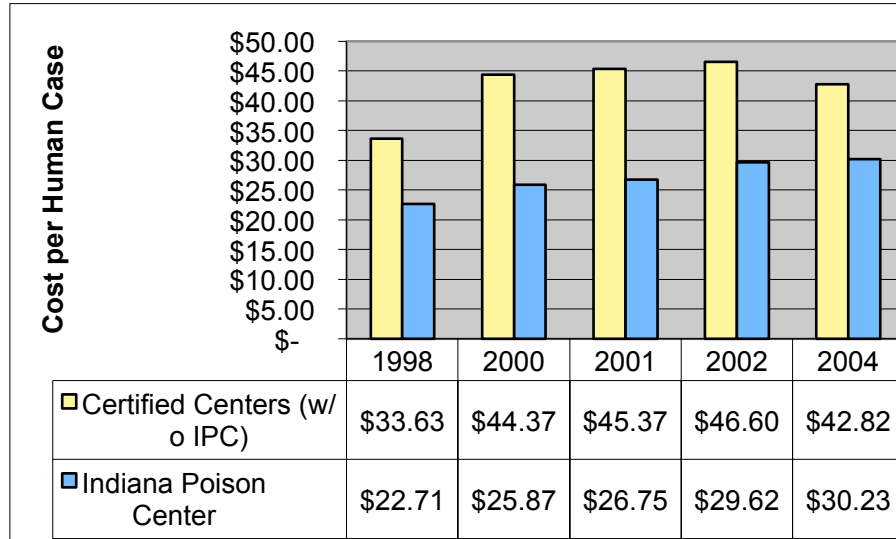


FACT SHEET 2012

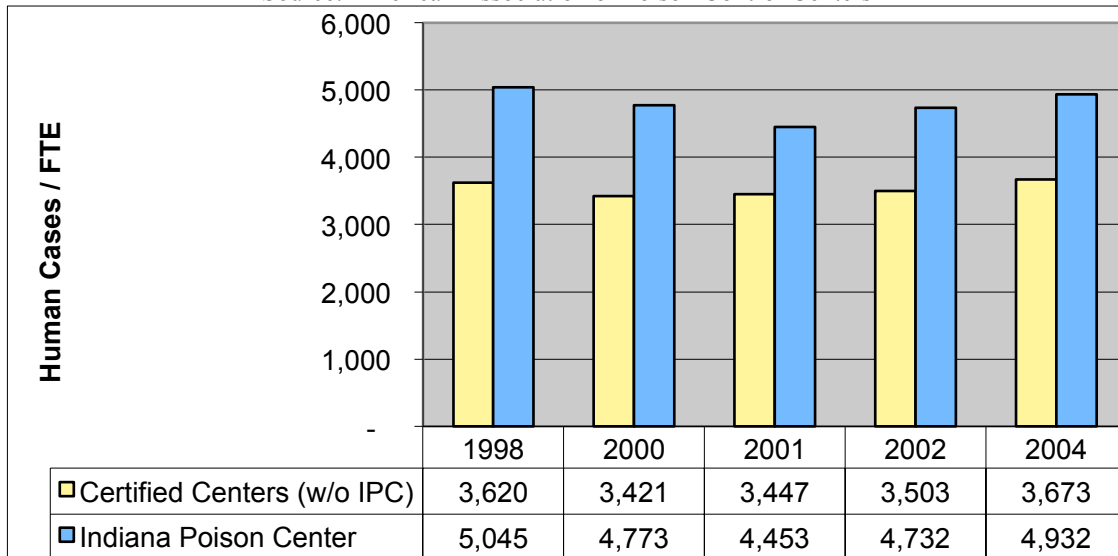
Services the Indiana Poison Center provides are mandated by IC 16-19-3-22. These include: 1) emergency poison information; 2) poison prevention education for the public; and 3) education to health care providers.

Statewide: 800-222-1222 Marion County: 962-2323

EFFICIENCY OF OPERATIONS



Source: American Association of Poison Control Centers



Source: American Association of Poison Control Centers